

## DESCRIPTION:

Model Number: PS-6G15G-600-A-SFF is a 6 - 15 GHz Analog Phase Shifter. This phase shifter is supplied in our standard PE2 housing that can be used as a SMA connectorized or a surface mount component.

This model provides the following performance. Data is available upon request.

## SPECIFICATIONS:

Frequency Range:	6 to 15 GHz
Phase Shift Range:	
6 - 8 GHz	600° Typ
8 - 15 GHz	200° Typ
Insertion Loss:	
6 - 10 GHz	12 dB Max, 8 dB Typ
10 - 15 GHz	7 dB Max, 4 dB Typ
Return Loss (In/Out):	8 dB Typ
Control Voltage Range:	0 - 10VDC
Modulation Bandwidth:	50 MHz Typ
Phase Voltage Sensitivity:	40° / V Typ
Insertion Phase	
Temp Sensitivity:	0.5° / V Typ

## ABSOLUTE MAXIMUM RATINGS:

Control Voltage:	+10 VDC
Reverse Current:	5 mA
Input Power:	+30 dBm CW

## AVAILABLE OPTIONS:

Various Package types  
Various Connector types  
Hermetic Sealing  
MIL-STD-883 Screening Available

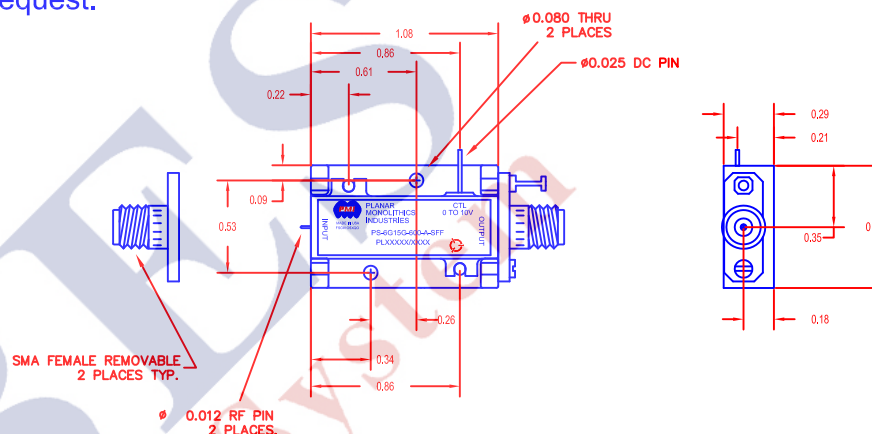
## ENVIRONMENTAL RATINGS:

Temperature:	-55 to +85 Deg. C (Operating) -65 to +150 Deg. C (Storage)
Humidity:	MIL-STD-202F, METHOD 103B COND B.
Shock:	MIL-STD-202F, METHOD 213B COND B.
Altitude:	MIL-STD-202F, METHOD 105C COND B.
Temperature Cycle:	MIL-STD-202F, METHOD 107D COND A

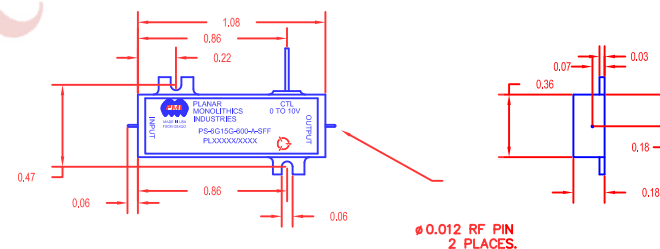
Note: The above specifications are subject to change or revision.

REVISIONS				
ZONE	REV.	DESCRIPTION	DATE	APPROVED
	—	PRELIMINARY RELEASE	8/25/11	

### PE2 HOUSING WITH CARRIER



### PE2 HOUSING WITHOUT CARRIER (SURFACE MOUNT)



PMI CONFIDENTIAL AND PROPRIETARY

## PLANAR MONOLITHICS INDUSTRIES, INC.

7311-F GROVE ROAD  
FREDERICK, MARYLAND 21704 USA  
TEL: 301-662-5019 FAX: 301-662-1731  
WEBSITE: [www.pmi-rf.com](http://www.pmi-rf.com)  
E-MAIL: [sales@pmi-rf.com](mailto:sales@pmi-rf.com)  
ISO 9001 CERTIFIED



ALL DIMENSIONS ARE IN INCHES  
TOLERANCES:  
X.XX ±0.020  
X.XXX ±0.010

APPROVALS		DATE		TITLE			
DRAWN	JRP		8/24/11	PRODUCT FEATURE PS-6G15G-600-A-SFF			
CHECKED				SIZE	FSCM NO.	DWG NO.	REV.
ISSUED				A	05XQ0	PRELIMINARY	—
				SCALE	N: S	SHEET	1 OF 1